

ROCKBOTTOM NEWS

Established 4th February 1964

November 15

Thank You to Waterloo Bay Club *"The Church and Lighthouse return home"*

The Mount Gravatt Members would like to express their appreciation for the inter club relations that has prompted Waterloo Bay to return the Church and Light house novelty gem craft items crafted by one of our former Members, Lionel Whitby. Novelty gem craft is still very active in our club and the club honors Lionel's input to the craft with a Memorial Trophy for novelty gem craft at our annual show.

Mt Gravatt lapidary Society Inc BY-LAWS

The BY LAWS were reviewed and passed at the October Meeting and the **Session Fees will be going up to \$5** from the 1st January 2016.

NEW FEE STRUCTURE

Three motions were put to the AGM :

1. To introduce a family membership eg 2 adults and 2 children
2. The adult membership Joining Fee is to go up by \$10.

The annual renewal is to go up by \$10.

3. The cost of posted newsletters would go up to \$15 per year, however email and printed newsletters picked up from the clubhouse are free.

Life Members will receive their posted newsletter cost free.

All three motions were passed unanimously and will be introduced from the 1st January 2016.

BAGS FOR SALE

Wilma is continuing to make her quilted bags for sale. They are priced at \$25 dollars and the proceeds will go to the building fund as a donation. Samples in the Hexagonal cupboard.

GREAT CHRISTMAS GIFTS

CHRISTMAS CLOSURE

The Club will close on the 18th December for the Christmas break and
recommence on 11th January.

SAVE THE DATE - 6TH FEBRUARY - IT'S OUR BIRTHDAY

We will be having a BBQ Lunch - \$3.00 per person
This will be followed by an afternoon of Trivia , Fun and Games
Rock up around 11.00 am

"This facility has been sponsored by the Queensland Office of Arts and Cultural Development "

Friendship and Fellowship – our precious gems

Presidents Report November 2015

Hi,

Many thanks go to Brad, Viv, Max, and David who turned up one Saturday and a mini working bee took place. The Cab room upgrade is advancing nicely with two motors now re-mounted on steel mounts and most of the old cupboards have been removed. The lights over the machines now complete.

We HAVE applied for the Federal Grant from Ross Vasta. On the 26th October we were informed that one of the first choices for his grants had pulled out and we had another chance if we could have the grant completed and to Ross Vasta's office by 29th to go to Canberra on the 30th October. With a lot of hard work, we made it, so we are in with a chance. We will know in January.

If we get this grant the Cab room will definitely have an overhaul. We have applied for all new motors for the current machines and an arbor to put specialized wheels to replace the silicone carbide wheels which are almost imposable to get.

Joe has introduced new pewter laps to the faceting room and this should complete the set up until we introduce the next two faceting machines.

Jim Horton

CHIEF INSTRUCTORS REPORT

The beginner silver classes were very successful and all participants appear very pleased with their spinner rings. They are seen wearing them very proudly. The club now is ordering silver from more than one supplier and we have different profiles on sale. Please let Tina or Trevor know if they are to your liking and we need to order more. If there are other profiles you would like to try let Tina know. The Club now has DURATECK Gas Torch- es and gas recommended for them for sale. See the instructor they will get them for you.

Thanks to a mini impromptu working bee we have started the process of upgrading all the cab motors and mounts. The noise and vibration has reduced markedly and is especially noticeable in the men's toilet.

The green silicone carbide wheels are difficult to get and those you can access are double the price. After much consultation it looks as if in the New-year we will trial a narrow coarse sintered wheel, otherwise it is back to the drawing board.

Brad Thomson

SILVER SUPPLIES

The club is now dealing with A&E Metals, another silver supplier. A&E have new and different profiles of silver some of which are now available. For more information contact Tina or Linda. Trevor will still be ordering from Twin Plaza if their prices are competitive.

WEARING OF LANYARDS

This is not an acceptable practice in the clubhouse and as such is classed in the same bracket as jewelry. Breakable lanyard or not this can get caught in the wheels or by the torch flame in silver and is a safety hazard.

SILVER CLASS

The last class for 2015 has come to an end with some pieces I'm sure the students must be quite proud of. The class may be finished, but I hope all students continue to discover many new and exciting techniques in silver. There is always help available during sessions.

Don't forget, now is the time to start accumulating your tools. The Club has some for sale. Tools can also be found around the home. It's amazing what can be "re-purposed".

A huge thank you goes to all the Instructors.



Friendship and Fellowship – our precious gems

Management Committee

President:

Jim Horton
0418 885 180
mglsresident@gmail.com

Vice President:

David Buhmann

Treasurer:

Tina Horton
0432 288 670
mglstreasurer@gmail.com

Secretary:

Louise Fieldhouse
0414 960 069
mglssecretary@gmail.com

Chief Instructor:

Brad Thomson
0407 576 094
mglschiefinstructor@gmail.com

Assistant Chief Instructor

Max Walsh

Publicity Officer

Linda Fountain
mglspublicity@gmail.com

Committee Officers

Assistant Treasurer:

Andrea Horton

Assistant Secretary:

Trevor Lewis

Maintenance:

1 Jim Horton
2 David Buhmann
3 Brad Thompson

Librarian

Sue Horton

Museum Curator

Sue Ericksson

Field Trip Officer

To be appointed

Providore

Trevor Lewis
Jim Horton

Chief Steward

Tina Horton

Stewards:

Trevor Lewis

Andrea Horton

QLACCA**Representative**

Tina Horton

Housekeeper

Contracted

Silver Committee

To be formed

Life Members

John Brady

Val Cugola

Sue Eriksson

Bob Kelly

Helen Petterson

Albert Taylor

Joan Taylor

Laurel Viogt

Kevin Voigt

LIBRARY**BORROWING**

Members may borrow up to two books at a time.

Please return all borrowed books within 2 weeks of borrowing them.

Please sign out all books being borrowed from the library.

There is a register for this purpose on or in the desk in the library.

TROPHY UPDATE

It was passed at the October Meeting that we go ahead and update all the trophies making sure they are up to date before our Gem Show.

LIBRARY REPORT

The Library has a new book this month for the Broom Casting by Bradford M Smith.

I would like to remind all members the Christmas break is coming up and to make sure their books are not over due. If you want reading over the break sign your book out in the last week and return it the first week back.

MINSOC REPORT

We Welcome all Mt Gravatt Member to the Minsoc Meetings at our club. The mineral society meets the fourth Wednesday at 7.30pm and Micro Minerals on second Saturday of the month at 9am.

QLACCA REPORT

QLACCA will be running a showcase judging coarse at the Mt Gravatt clubrooms on the 12th & 13th of December. Those interested in become a judge for showcases should contact Graham McLean on 3288 9883.

J&R Definition of a showcase: A Showcase is defined as an enclosed case with a maximum base area of 1 square metre, maximum width of 1.3 metres and maximum height of 1 metre, which has been dressed by the entrant and in which the entrant displays items and labels as required by the Competition Schedule.

EQUIPMENT

New coarse files for the silver area

Gas torches for beginners. (The same torches are available at the club for sale)

New Pewter Laps for the Facetors

NEW MEMBERS

The Club Continues to grow with more new Members. Say hello and introduce yourself and make our new Members welcome.

FACEBOOK

The club now has its own Facebook page up and running with likers joining everyday. Linda Fountain mglspublicity@gmail.com and

Louise Fieldhouse mglsecretary@gmail.com are the administrators of the page. Have a look and keep up to date with what is going on at the club, especially if you are away or unable to attend for an extended period.

ADVERTISING

Beginning next year, the Newsletter will offer advertising space. Pricing schedule :

Business Card size	\$15.00 per issue	A6 (1/4 page)	\$30.00 per issue
A5 (1/2 page)	\$60.00 per issue	A4 (full page)	\$120.00 per issue.

Advertising will assist in reducing the cost to our Club in providing this newsletter. If you would like to advertise your business, a "for sale" item, an upcoming event, contact Linda Fountain either at the Club or via email at mglspublicity@gmail.com

JIM MAZITELLI and novelty gem craft

In the article Zelda Welland wrote for the October Rockbottom News, she mentioned Jim Mazitelli a past club member. The content in this article were written by Joan Taylor previously for the magazine in c. 2004.

“Jim Mazitelli has been a member of the Mt Gravatt Lapidary Society since 1979 and is truly one of the Club’s best hidden treasures.

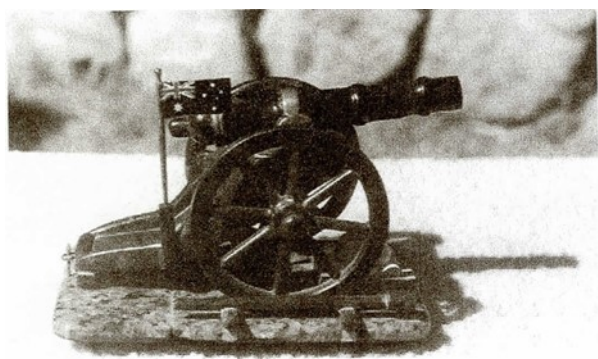
Jim is 83 years young and actively pursues his hobbies daily. He has recently joined the club’s silver jewellery making class and is now converting some of his lovely cabs into jewellery. No doubt some of them will find their way into hands of his lucky family, including three grandchildren and seven great grand-children.

He is one of our panel of instructors and delights in introducing new members to the lapidary arts. In his spare time he keeps the club mower running!!

Jim has produced some outstanding examples of novelty gem craft and is always happy to pass his knowledge on to others. He has also made many models of cars, fire trucks etc. out of different rocks and all to scale.

He begins each project by making a plan to scale, using graph paper, and making out all the component parts. Initial shaping is done with the trim saw, and then the pieces are ground to shape and polished using a flat lap or glass when necessary. When all the pieces have achieved the high polish he likes, they are carefully joined, making sure that there is no glue showing and then mounted on an appropriate base. Any metal trimmings are added last.

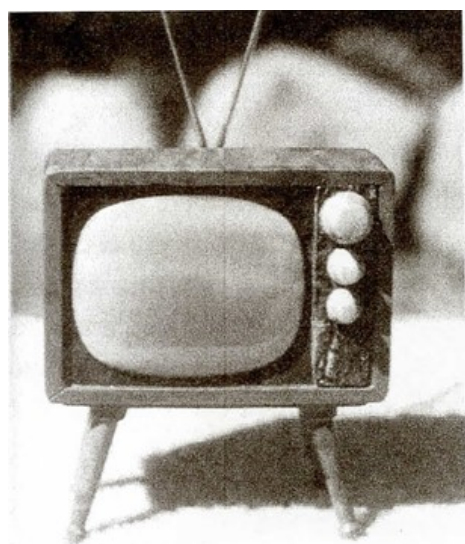
All this takes many hours but the results are breathtaking. He is truly a master craftsman.”



Cannon – is Basalt on Marble---
(the basalt coming from his son's property)



Record Player - Petrified Wood, from the Gunnedah area



TV - Agate for the screen, Tiger Iron panels, Petrified Wood knobs
and a Jasper for the cabinet



Cello –made of Jasper and Rhodonite

Friendship and Fellowship – our precious gems

8 TIPS ON HOW TO POLISH STONE WITH CONFIDENCE

1 WET GRIND – Always grind wet to protect your lungs from breathing in the dust. The dust from some stones such as malachite, is quite toxic. In addition, wet grinding eliminates damage to expensive diamond wheels.

2 JUDGE DRY – Although we always grind wet we recommend that you always dry the stone completely before judging the surface. Water on the stone surface will only hide scratches, and give a false reading.

3 USE THE WHOLE WHEEL – Use the entire width of the grinding wheel, not just the center. This will ensure a longer life and better performance.

4 SKIP ON GRIT – Work sequentially from the coarsest to the finest grit. Don't be tempted to take a short cut by skipping a grit. The progression through finer and finer grits is necessary to remove the scratches left by the previous grit. The goal is to have the scratches become finer with each grit size until they can no longer be seen. Our experience has been that if you skip a grit the final polish will show big scratches. You will wonder where those scratches just came from. The truth is that they were there all the time but you just didn't sand them out when you were supposed to. If you skip a grit and find deep scratches, you'll have to go back three or four grits to remove them. It is always faster to do it right the first time.

5 POLISH SLOW – Polishing is the final step. There are a myriad of polishing pad combinations, our preference is charging soft leather pad with a thin paste of polishing compound and water. The actual polishing occurs as the pad starts to dry and the stone starts to pull against the pad surface. We keep the speed of the pad low to eliminate any heat build up.

6 KEEP IT CLEAN – Remember 'cleanliness is next to godliness' when it comes to lapidary work. To prevent cross contamination from coarse grits we are careful to rinse the stone and our hands at every grit change and to thoroughly clean our machines after each grinding session. Polishing compounds and wheels should be kept in sealed plastic containers when not in use.

7 BELIEVE WHAT YOU SEE – Your eyes are your most important tools when it comes to polishing your stones. They are your feedback loop. If your eyes tell you something is not quite about the surface, believe them. Stop! Figure out what the problem is before continuing.

8 GRIND A LITTLE AND LOOK A LOT - This is the mantra of the successful Lapidarist.

From the Lapidary Club News of NSW Sept.2014

GEMSTONE HARDNESS

Hardness can be tested by scratching.

A scratch on the surface of a mineral is actually a groove produced by micro-fractures on the surface of the mineral. A mineral can only be scratched by a harder substance. A hard mineral can scratch a softer mineral, but a soft mineral can not scratch a harder mineral (no matter how hard you try). Therefore, a relative scale can be established to account by the difference in simple by seeing which mineral scratches another.

That is exactly what French mineralogist Friedrich Mohs proposed almost one hundred and seventy years ago. The Mohs Hardness Scale starting with Talc at 1 and ending with Diamond at 10, is distinguishing minerals. Simply put, the higher the number, the harder the mineral.

The Mohs Hardness Scale

	Knife blade 5.5
1. Talc	6. Orthoclase
2. Gypsum	Steel File 6.5
Your finger nail 2.5	7. Quartz
3. Calcite	8. Topaz
4. Fluorite	9. Corundum (Ruby & Sapphire)
5. Apatite	10. Diamond

DATES TO REMEMBER

11th January	Club Re-opens
26th January	Australia Day
6th February	Birthday BBQ at Mt Gravatt Clubhouse
6th February	QLACCA Management Meeting Gunyah Club Rooms 10.00am
27th February	Gatton Gem Show, Shire Hall, North Street

If undelivered please return to

Mt Gravatt Lapidary Society Inc
PO Box 150
Mount Gravatt Qld 4122

Mt Gravatt Lapidary Society Details

Address:

Mt Gravatt Park, 1873 Logan Road, Upper Mt Gravatt Qld 4122

Postal Address:

P.O. Box 150, Mt Gravatt Qld 4122

Phone: (07) 3219 3381

Email: mtgravattlapidaryclub@gmail.com

Website: mtgravatt.lapidaryclub.com.au

Club meetings are held on the third Wednesday of the month at 7.30pm. All Members are welcome and are encouraged to attend.

7.30 pm. All members are welcome and encouraged to attend.

Club Opening Hours

Mon 7.30—9.30 pm

Tues 7.30—9.30 pm

Wed 9.00—12 noon

Fri 9.00—12 noon

Fri 7.30—9.30pm

Closed public holidays

Open Saturday 3rd Saturday of the month

Open Sunday 4th Sunday of the month

Silver Classes

Tue 9.00—12 noon

Thur 7.00—9.30

Mineral Society

Last Wednesday of the month at
7.00 pm

JOINING FEES

Adult Members - \$60 - Comprising \$30 joining fee, \$30 annual subscription and \$10 badge.

Junior Members (between 10 and 16 years) - \$25 - Comprising \$5 joining fee, \$10 annual Subscription and \$10 badge.

NEWSLETTER LEVY for posted Newsletters \$15.00 per year. Newsletters collected from the Club are free

Newsletters are posted to Life Members free of charge

Friendship and Fellowship – our precious gems